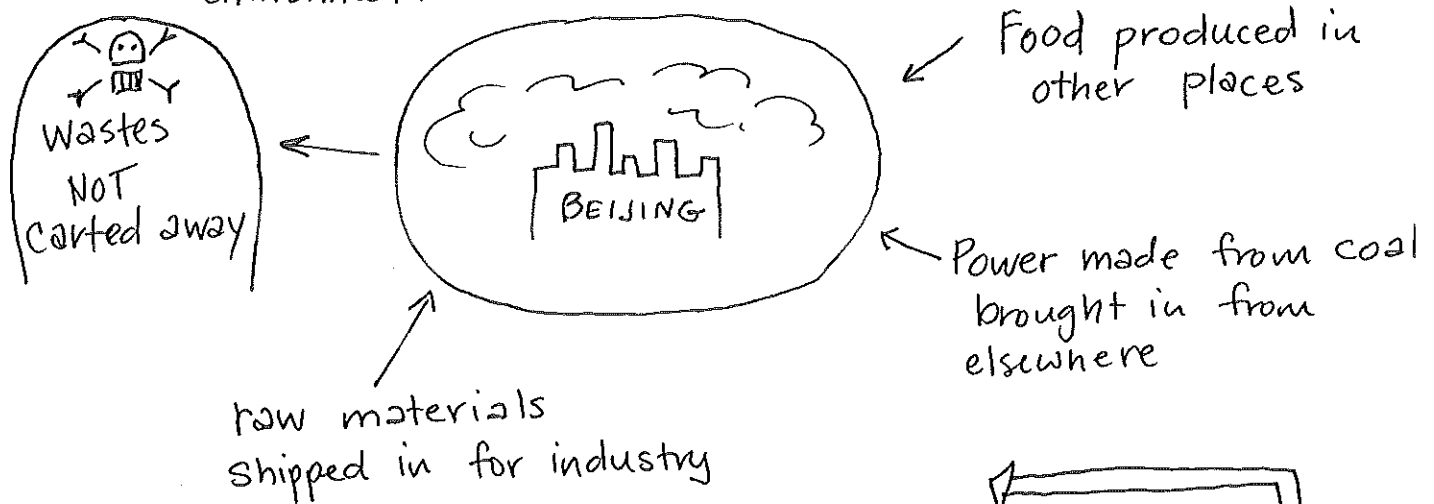


3.8.1 Explain the concept of an ecological footprint as a model for assessing the demands that human populations make on their environment.



⇒ in order for the population of Beijing to survive "stuff" must be brought in & wastes must be dealt with

↑ Pollution in water & air gets swept away

* London is 170,000 hectares but EF of 21 million hectares

Food PRODUCTION

MEAT-Based diet = ↑ Fossil Fuels (MEDC's)

VEG-Based diet = ↓ Fossil Fuels (LEDC's)

This way of calculating EF ignores - aquatic & atmospheric resources, assimilation of wastes other than CO_2 replace loss of productive land with urbanization

Waste absorption

depends on capacity to absorb CO_2 → Forests & lots of Plants → absorb CO_2 deserts little productivity → Can't absorb CO_2

We will only look @ Food PRODUCTION & WASTE ABSORPTION